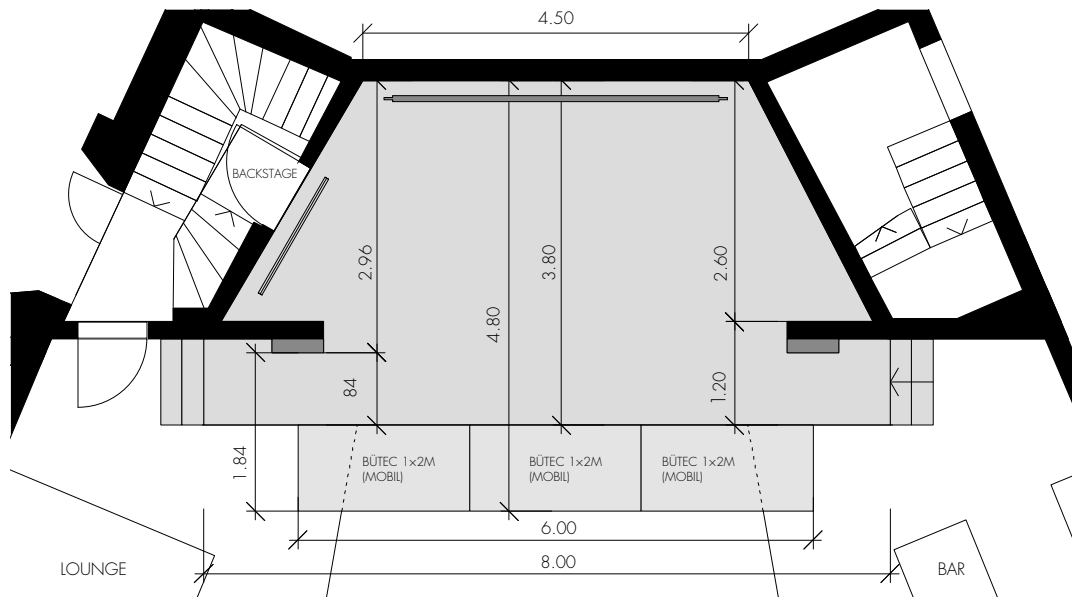
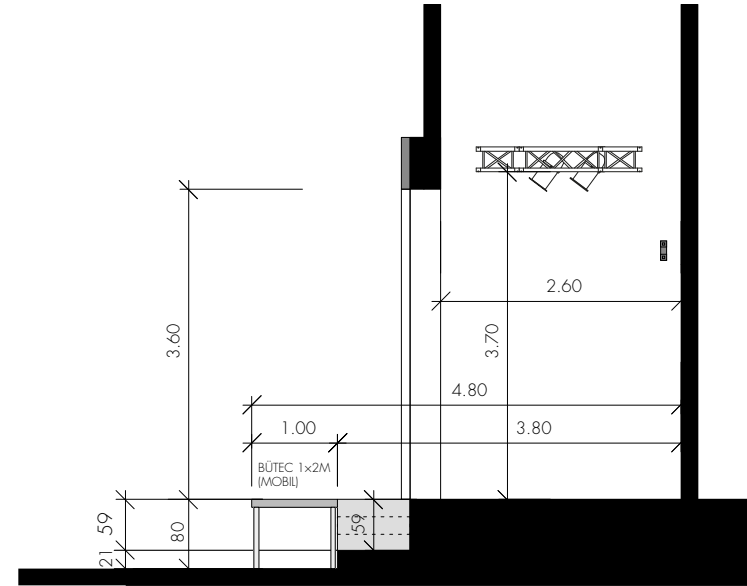


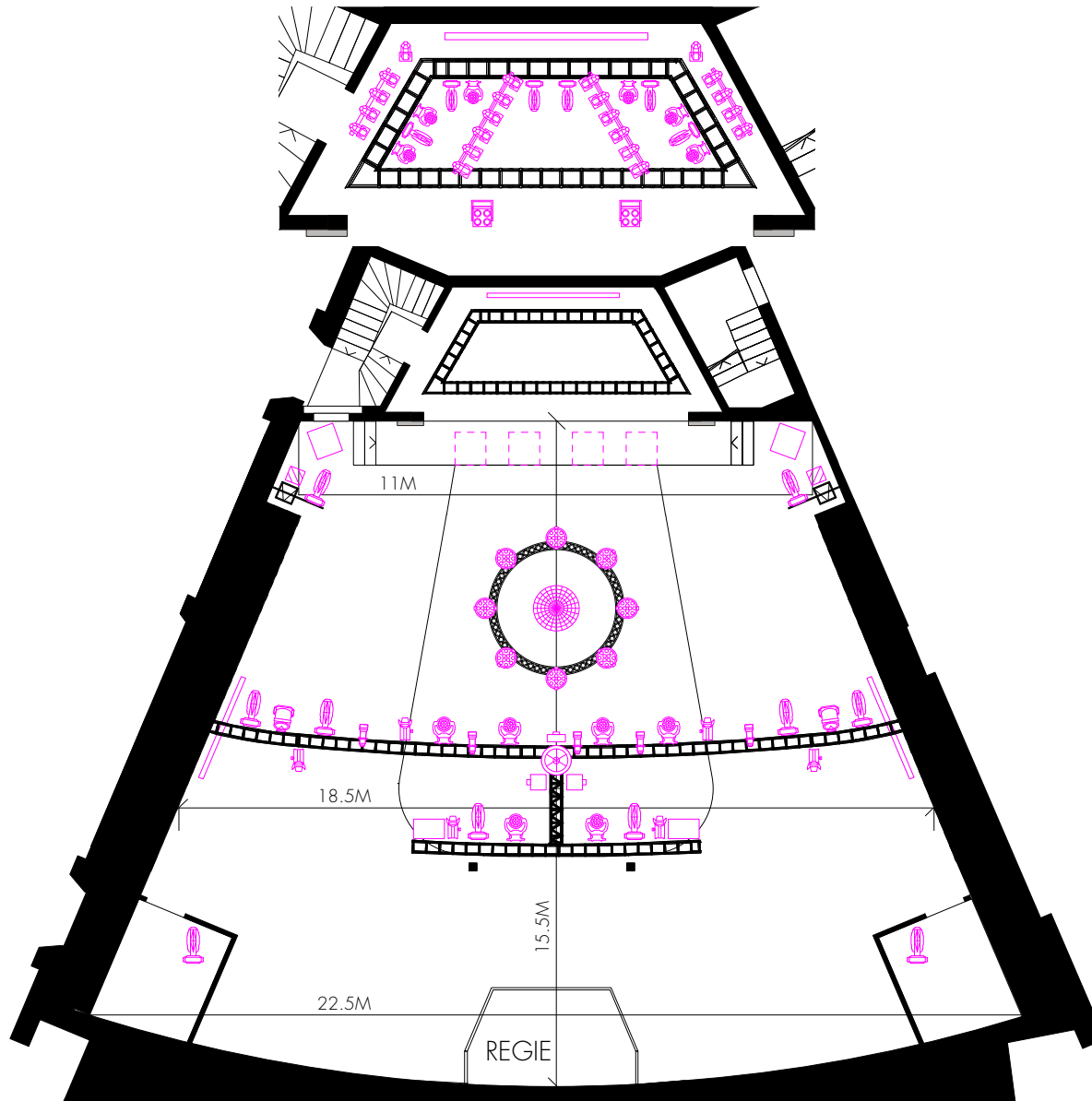
TECHNICAL MAPS

Stage



TECHNICAL MAPS

Stage



STAGE EQUIPMENT

P.A.

KV2 Audio VHD 2.15



KV2 Audio VHD 2.0 (1x) & VHD 2.15 (2x)



KV2 Audio ES 1.0 & ES 1.5



LIGHT RIDER

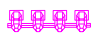
Cameo F2 FC LED-Fresnel-RGBW



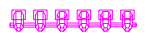
DTS Stageblinder Flash 8000



DTS ACL-Par 64 Classic Pro



Six-bar Par 64 horizontal



Six-bar Par 64 vertical



dts MAX



Briteq BT-W19L10 Zoom



ETC Source Four 15°-30°



UV Lights



Motor Screen



Laser 1100mW, RGB



Swirl Fan XL



Spiegelkugel Ø1.5m



Ayrton CosmoPix-R



Beamer Panasonic PT-RZ570



Beamer EIKI EK-623U

